



NERIS: What we Know and What we are Learning

Tom Jenkins, Fire Chief – National Emergency Response Information System



Science and
Technology



U.S. Fire
Administration



Research
Institutes

Fire Safety
Research Institute



Tom Jenkins

Senior Advisor / Research
Program Manager

ULRI-Fire Safety / NERIS

Fire Chief (Ret)

**Rogers Fire Department (Rogers,
AR)**

Thomas.Jenkins@ul.org



The goal of NERIS is to empower the local fire and emergency services community by equipping them with near real-time information and analytic tools that support data informed decision-making for enhanced preparedness and response to incidents involving all hazards.



*Using data to lead
your department*

NFIRS

2026



NFIRS



NERIS

2026 incident reporting will only be in NERIS.

Starting Jan. 1, 2026, incident data submission will be exclusively in NERIS.

- No calendar year (CY) 2026 incidents will be submitted into NFIRS.

Jan. 31, 2026: end date for edits/modifications for CY25 incident records in NFIRS.

NFIRS will be unavailable for all users starting in February 2026.

NERIS – A Balancing Act



NERIS – A Balancing Act



National Benefits



- Near real-time information
- Solidarity with RMS
- Interaction & connection with CADS
- Adaptability with feedback
- A culture shift -
Improvement on data input quality



The Big Shift

- All-hazards departments
- Identifying real emerging hazards
- Timely funding prioritization
- Adaptable and Dynamic





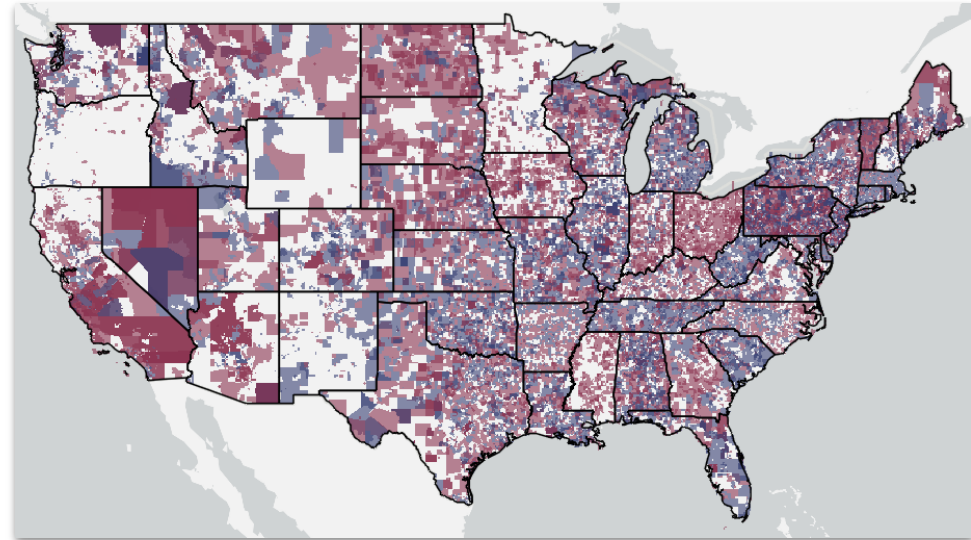
**Why is NERIS built
this way?**



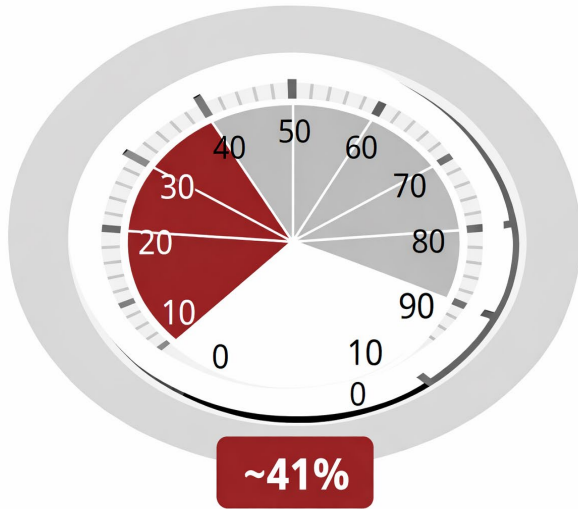
① Onboarding and Transition Update

Onboarding Update

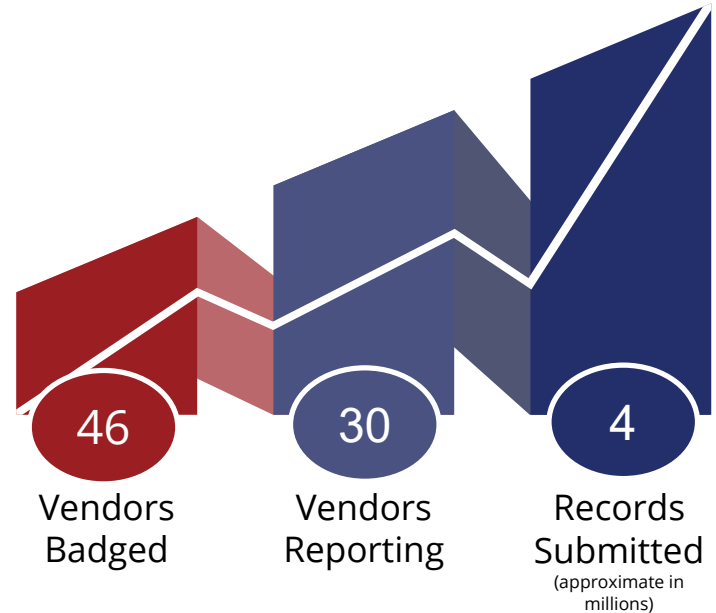
- Over **4,100,000** incidents reported.
- Nearly **25,000** interactions with departments with questions and problems.
- Around **13,800** FDs reporting.



January 2026 : NERIS Onboarding Fast Facts



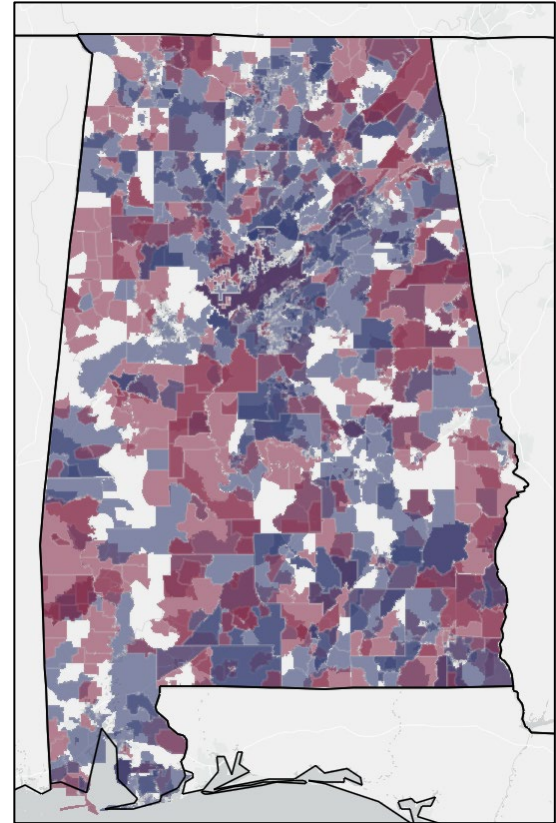
National Reporting Progress



Integration Partner Program

Alabama Onboarding Update

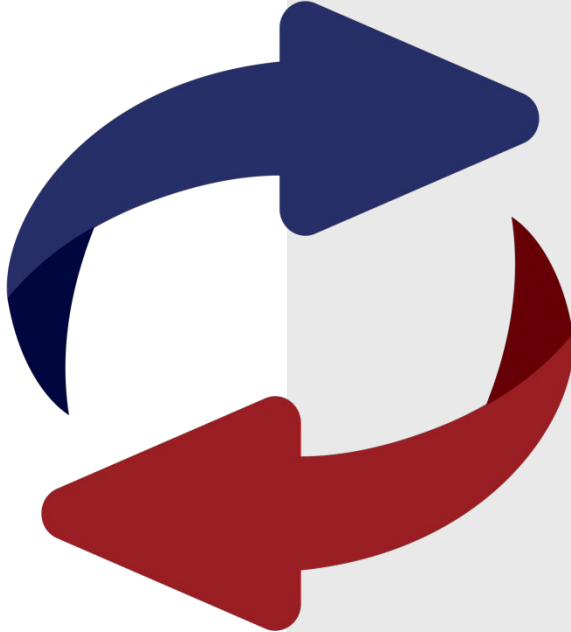
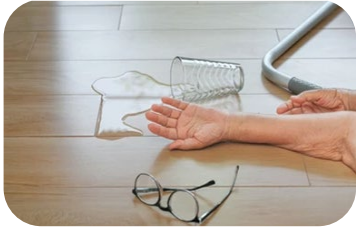
- **448** Departments Reporting into the system
- **627** Unverified or Inactive departments



**What does NERIS have
to do with leading fire
departments?**

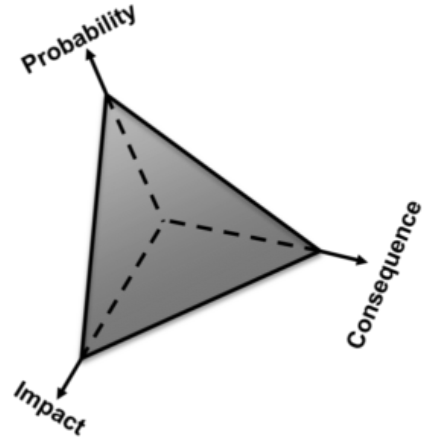
EVERYTHING

Matching Risk & Resources

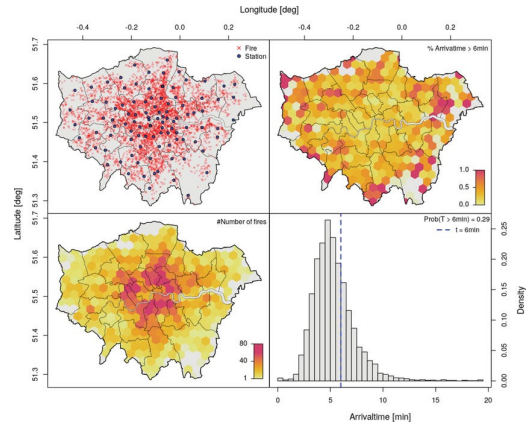




Risk



Deployment



Performance

Incidents 28,675

Displacements 228

Incident Location Types

Location	Count
RESIDENTIAL	8088
-	7695
RESIDENTIAL[DETACHED_S]A	1998
HEALTH_CARE	1520
ROADWAY_ACCESS	1513
RESIDENTIAL[ATTACHED_S]M	874
COMMERCIAL	786

Incidents Map

Incidents by Discipline

Incidents with Multiple Disciplines

Incident Count Per Week

Incident Details

Incident ID	Dispatched Date	Incident Type	Location Type	Outcome
TREES23567	2025-07-15T13:03:53.000Z	MEDICAL	RESIDENTIAL[DETACHED_S]INGLE	Medical call at cold location one 271
SRCF202510811	2025-07-15T14:02:01.000Z	NOEMERG	RESIDENTIAL[DETACHED_S]INGLE	Engine #1 was dispatched to an air
25AUB-3368-IN	2025-07-15T15:01:00.000Z	HAZBIT	-	07/15/2025 17:48:52 Dispatched 1
2025-1696	2025-07-15T13:49:45.000Z	MEDICAL	EDUCATION[COLLEGE]UNIVERSIT	07/15/2025 12:55:16: 101 and 127
HFD-2025-03814	2025-07-15T13:46:15.000Z	MEDICAL	-	07/15/2025 09:39:59: 255 respond
250035109	2025-07-15T13:43:45.000Z	NOEMERG	OUTDOOR[INDUSTRIAL]INDUSTRI	Muscle Shoals Ladder 4 and Car 2 c
2507239	2025-07-15T13:40:30.000Z	MEDICAL	ROADWAY_ACCESS[SIDEWALK	One patient was found laying on the
LCF5-2025-0006533	2025-07-15T13:33:52.000Z	NOEMERG	-	07/15/2025 12:55:36: Engine 302 r
2025-03467	2025-07-15T13:25:00.000Z	MEDICAL	-	07/15/2025 10:53:36: Engine 5 res
NF25071500003549	2025-07-15T13:24:00.000Z	MEDICAL	EDUCATION[COLLEGE]UNIVERSIT	07/15/2025 11:29:24: E1 was dipo
2025-00013625	2025-07-15T13:23:05.000Z	PURSERV	-	E44 responded to a man down in th
122025-001867	2025-07-15T13:22:58.000Z	NOEMERG	RESIDENTIAL[DETACHED_S]INGLE	Engine 1901 responded to a smoke
2025-032714	2025-07-15T13:21:53.000Z	NOEMERG, HAZBIT	RESIDENTIAL[DETACHED_S]INGLE	Dispatched to a possible bomb thre
2025-1695	2025-07-15T13:20:17.000Z	HAZBIT	UTILITY_MISC[WATER_SANITATION	07/15/2025 13:10:39: 101 and 127



5 Things You Need to Know About NERIS to Help Your Department

Incident Types Have Changed

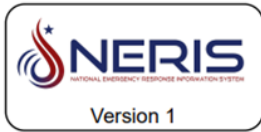
- Incident types completely re envisioned.
 - Dieted and streamlined list of incident types to select from (39% reduction).
 - False alarm types condensed and organized to prevent confusion.
- A primary incident type can be utilized to signal the appropriate ERF utilization in complex incidents.
- Complex Incidents can be documented.

New Incident Types:

- Wildfire
- Wildland-Urban Interface
- Train & Rail Fire
- Aircraft Incidents (Aircraft Fire, Aircraft Crash, Aircraft Standby)
- Specific Medical Incident Types

NERIS Incident Type(s)

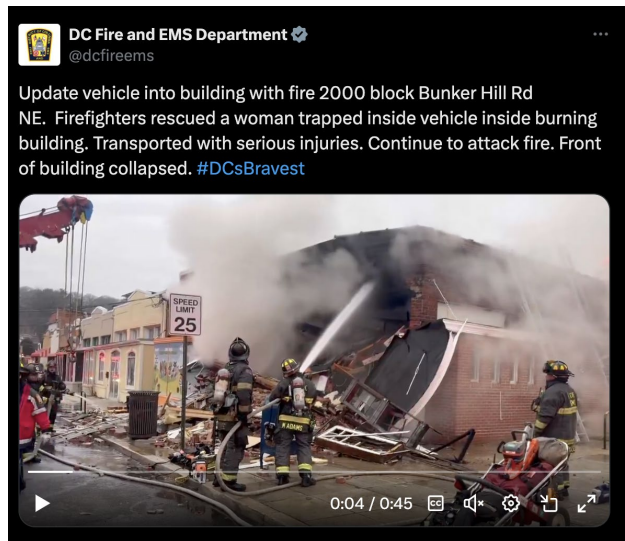
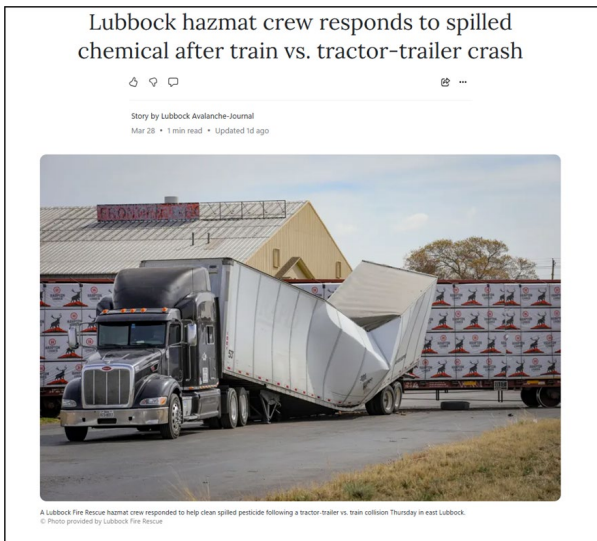
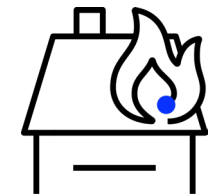
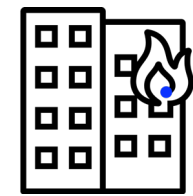
Fire	Medical	Hazsit	Rescue	Public Service	No Emergency	Law Enforcement Support
Outside Fire	Illness	Hazard Non-Chemical	Outside / Outdoor	Citizen Assist	False Alarm	
Special Fire	Injury	Hazardous Materials	Structure / Indoor	Alarms (Non Medical)	Good Intent	
Structure Fire	Other	Overpressure	Transportation / Land	Disaster / Weather	Cancelled	
Transportation Fire		Investigation	Water	Other		



Incident Types and Metrics of Significance



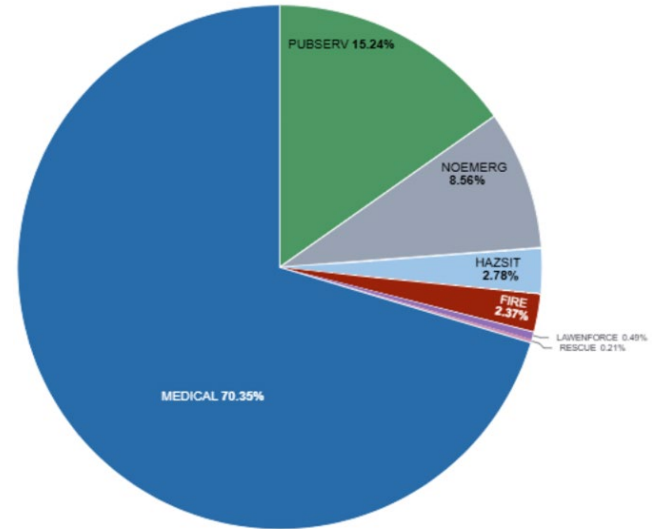
Incident Types: Modernized and streamlined with the ability to properly depict complex incidents by using up to three incident types.



Common Incident Type Questions

How do we classify...

- Motor Vehicle Accident?
- Provide Manpower?
- Cancelled Prior to Arrival?
- Community Risk Reduction Effort?



Focus on describing what you find upon arrival, using other secondary incident type(s) as necessary. It isn't about the easiest solution; it is about accuracy for incidents of significance and importance.

The NERIS Data Dictionary provides clear definitions and detailed explanations of the data structures used across the system. You can search for specific terms or related values, or browse by module to understand how each dataset supports fire incident reporting and analysis. This resource helps users accurately log incidents, interpret reports, and ensure consistency in data across departments.

Incident - Incident Type(s) Core Incident Size 100 Search Clear

Showing results for "Incident - Incident Type(s)" in module "Core Incident"

Incident - Incident Type(s)

Incident - Incident Type(s)

Disposition or final incident type as assessed on scene.

modules: [Core Incident](#) type: text element name: incident_final_type

Values ↕

FIRE||OUTSIDE_FIRE||CONSTRUCTION_WASTE ^

Description: Construction Waste

Definition: An outdoor fire incident involving the ignition and combustion of construction materials, debris, or waste.

FIRE||OUTSIDE_FIRE||DUMPSTER_OUTDOOR_CONTAINER_FIRE ^

Description: Dumpster / Other Outdoor Container Fire

Definition: An outdoor fire incident involving the combustion of materials inside a dumpster or similar container, often consisting of waste and discarded items.

FIRE||OUTSIDE_FIRE||OTHER_OUTSIDE_FIRE v

FIRE||OUTSIDE_FIRE||OUTSIDE_TANK_FIRE v



Incident Type = Context



**Actions & Tactics
= The Core of the Story**

Information After Arrival is Prioritized

Actions/Tactics

- How did you solve and mitigate the incident?

Tactical Timestamps

- How was your department performance in these critical benchmark areas?

Fire Conditions

- What did you encounter upon arrival that made you select the tactics and actions you did?

Suppression Methods

- What appliances and methods did you use to suppress and extinguish the fire?

Fire Incident Information

Describe the primary nature of the fire incident.*
Select one.

► Details

Structure Fire

Outside Fire

Describe the extinguishment tools used for fire suppression.
Select all that apply.

Small Diameter (1 inch to 2 inch) Fi... ▼

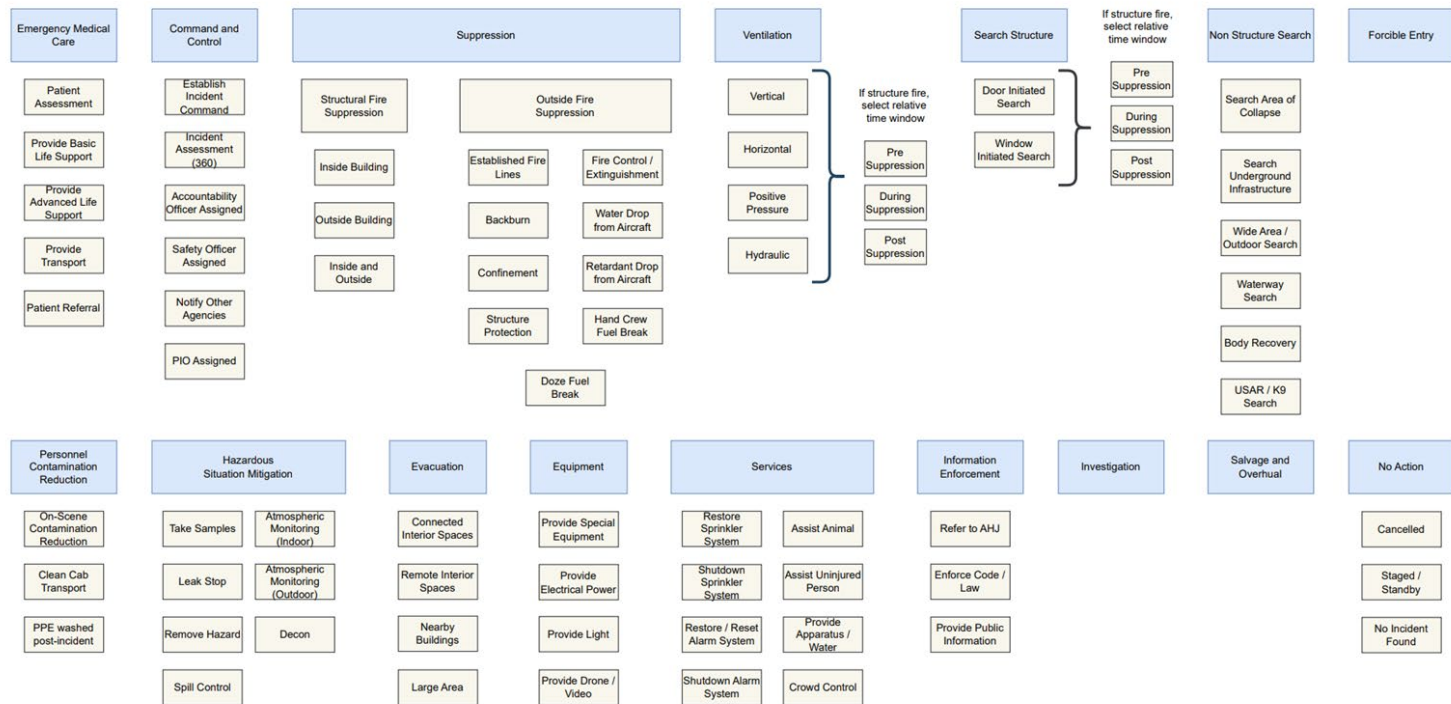
Describes the type of water supply utilized for the incident.*
Select all that apply.

Hydrant (Est. Flow > 500 gpm) ▼

The fire conditions upon arriving on the scene of the incident*
Select one.

-Please select- ▼

Did the fire extend beyond the conditions found upon arrival?
-Please select- ▼



Actions and tactics describe what your department DID to solve the problem(s) at the incident. Be accurate and complete.



Suppression – Structural Fire Suppression (Interior)



Search Structure
Primary Search



Ventilation – Vertical



Suppression

Structural Fire Suppression

Inside Building

Outside Building

Inside and Outside

Outside Fire Suppression

Established Fire Lines

Backburn

Confinement

Structure Protection

Fire Control / Extinguishment

Water Drop from Aircraft

Retardant Drop from Aircraft

Hand Crew Fuel Break

Doze Fuel Break

Ventilation

Vertical

Horizontal

Positive Pressure

Hydraulic

If structure fire, select relative time window

Pre Suppression

During Suppression

Post Suppression

Personnel
Contamination
Reduction

On-Scene
Contamination
Reduction

Clean Cab
Transport

PPE washed
post-incident



The Story of “Where” is Finally Being Told

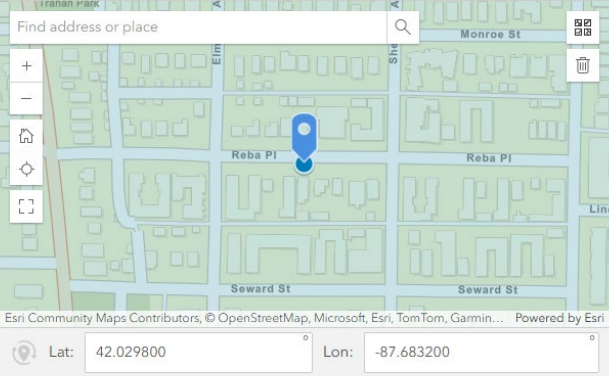
- Geocoded Address
- Intersections
- Map Point
- Map Polygon

Location Info ▾

Is the incident best represented on a map as a point (e.g., address, intersection) or an area?*

Point Area

Use the search bar to enter an address or place a point on the map where the incident occurred.*



The screenshot shows a map interface with a search bar at the top containing the text "Find address or place". Below the search bar is a map with a blue location pin placed on the intersection of Reba Pl and Seward St. The map includes street names such as Monroe St, Seward St, and Reba Pl. At the bottom of the map, there are coordinate fields: "Lat: 42.029800" and "Lon: -87.683200".

Esri Community Maps Contributors, © OpenStreetMap, Microsoft, Esri, TomTom, Garmin... Powered by Esri

Lat: 42.029800 Lon: -87.683200

Low Frequency, High Risk Incidents Can Be Identified

1. Active Assailant
2. Mass Casualty Incidents
3. Federal Declared Disaster
4. State Declared Disaster
5. County Local Declared Disaster
6. Urban Conflagration
7. Violence Against Responder



Incident Modifiers Common Questions

- What constitutes a local, state or federal disaster and how would I know if I should mark it?
- Does “violence against an emergency responder” mean physical or can it be verbal?



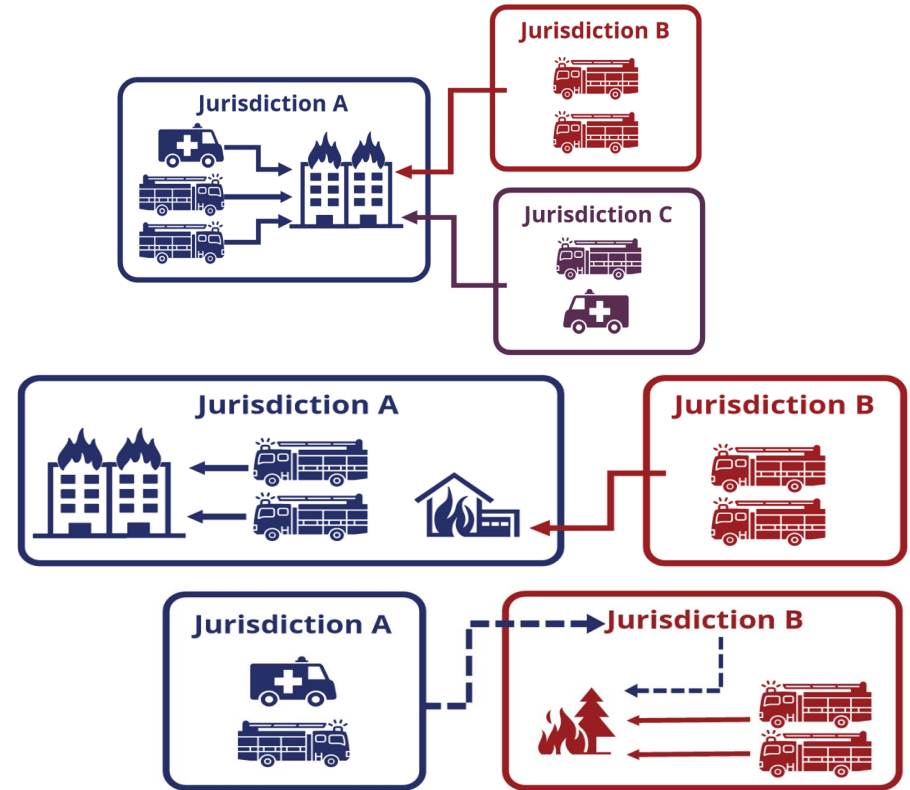
Use the data dictionary when you encounter things that might require more information.

www.neris.fsri.org/data-dictionary

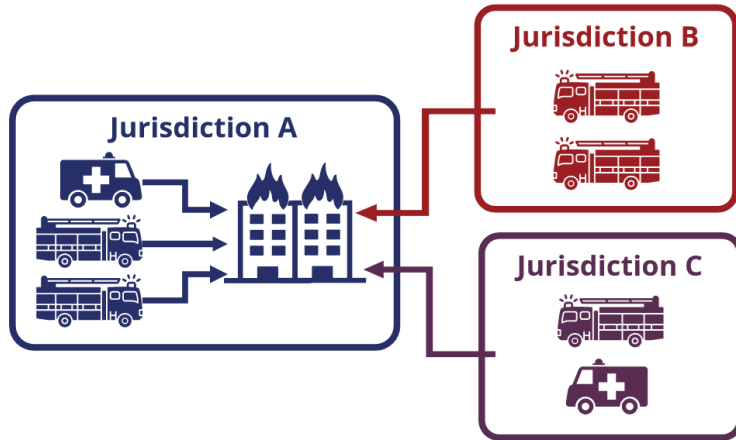
Aid is Streamlined and Simplified

Interagency Aid:

- 1) In Support of
- 2) In Lieu of
- 3) Acting as



Interagency Aid - In Support Of



In Support Of Aid is the most common and characterized by:

- Both the department of jurisdiction AND an aiding department being on scene.
- Most common form of mutual/automatic aid.
- Both departments complete an incident report and “tag” each other.

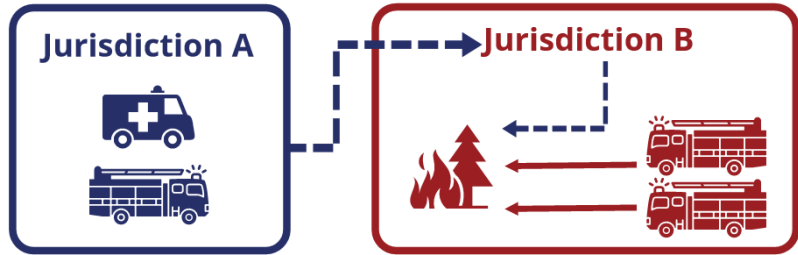
Interagency Aid - In Lieu Of



In Lieu Of Aid is new to the national dataset and is characterized by:

- A department providing aid outside of its jurisdiction and into the jurisdiction of another agency.
- Only the department providing aid completes an incident report and “tags” the agency they’re assisting.
- Previously this was aid that was unreported (in most cases).

Interagency Aid - Acting As



Acting As Aid is rare and characterized by:

- A department providing aid outside of its jurisdiction and into the jurisdiction of another agency under a formal, contractual or prearranged deployment.
- Only the department providing aid completes an incident report and “tags” the agency they’re acting as.
- Previously this was aid that was unreported (in most cases) as aid.
- This is an uncommon form of aid in most circumstances.

Interagency Aid

Aid with Fire Departments

Interagency aid involves NERIS departments that can provide reciprocal service.

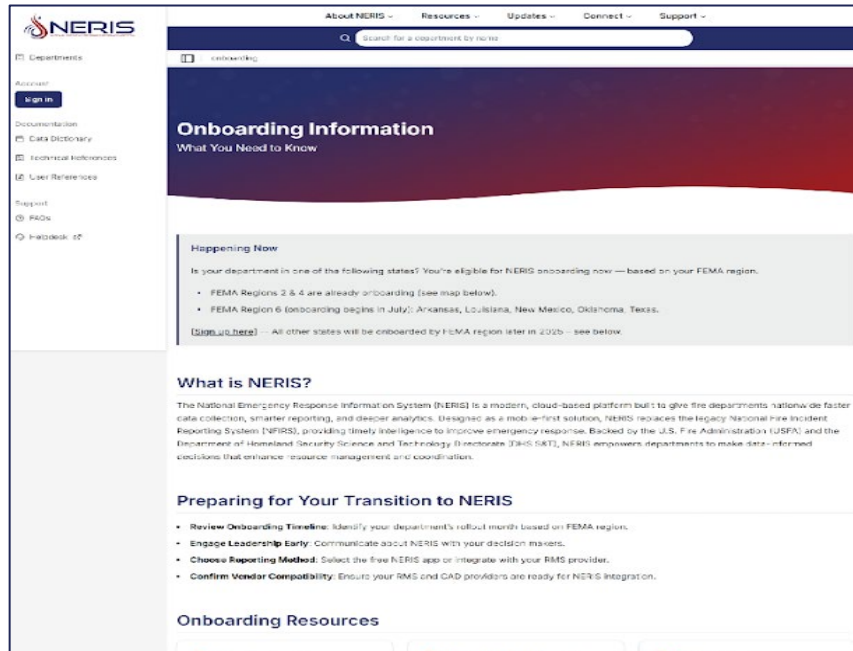
Aid with Ambulances

Interagency aid to private ambulances is handled in the Non-FD aid field generically.



NERIS: Change Management

NERIS Transition – One Stop Shop



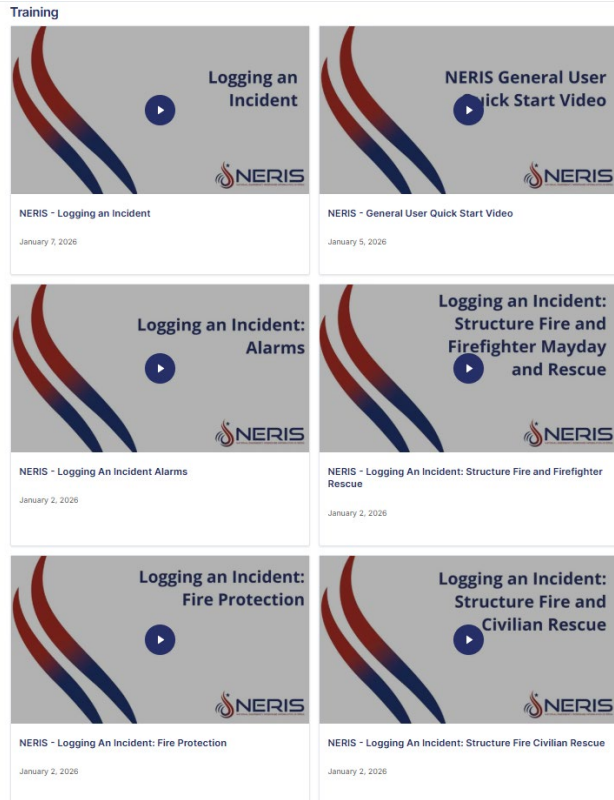
Website Content:

- Education materials
- Onboarding help
- Quick training videos
- News and events
- Access to the helpdesk

www.neris.fsri.org

NERIS.Helpdesk@ul.org

Digestible Training Videos



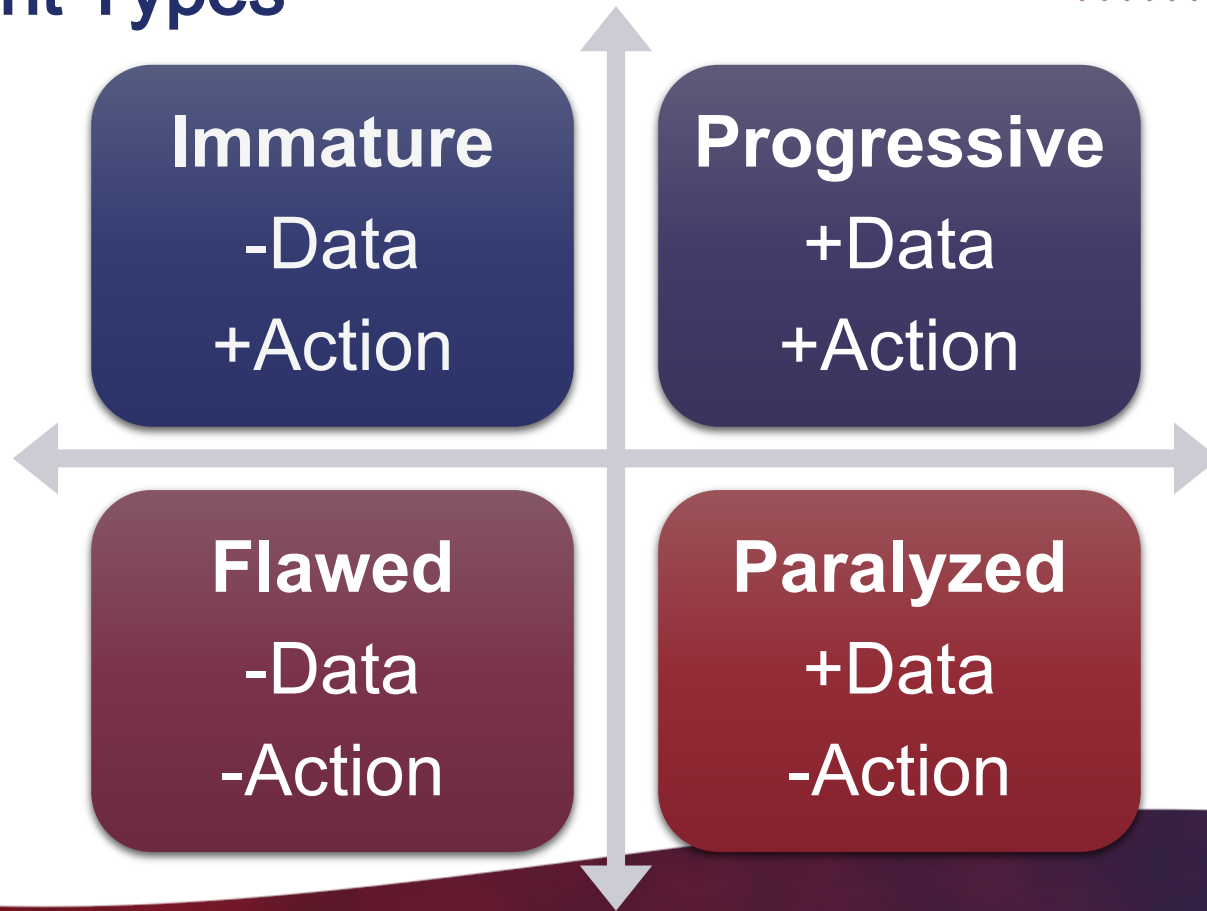
Logging an Incident

- Alarms
- Structure Fire & Firefighter Mayday/Rescue
- Structure Fire & Civilian Rescue
- Other Agency Aid
- Multiple Incident Types
- EMS
- Rescue with Extrication
- Displacements & Exposures
- Medical Assist



Data + Action: Four Classifications of Fire Departments

Department Types



The Fundamentals



We must understand the spectrum of our service delivery.



We cannot rely on opinions and emotional arguments to understand our delivery model.



The timeline of the emergency requires better analysis, from call receipt to firefighter health outcomes.



**NERIS turns data into
a story the
community can
understand.**

NERIS as a Decision - Making Tool for Community Leaders

Decisions

- Budget Allocation
- Staffing Levels
- Capital Planning
- Policy Changes

NERIS-Supported Insights

- Demand vs. Staffing Alignment
- Workload Trends
- Service Expansion Justification
- Grant Readiness



Building Trust Through Transparency

Building Trust Through Transparency.



Consistent Reporting



National Benchmarking



Shared Challenges

Transparency Builds Trust. Trust Builds Support.

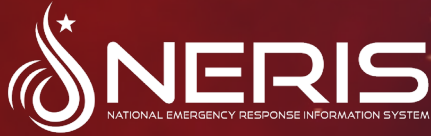
NERIS Isn't the End Product



The value of NERIS isn't in the data we collect, it's in the conversations it enables.

A culture shift is necessary.

Review your data. Use your data.



Thank you.



FAQS: <https://neris.fsri.org/faqs>

WEBSITE: <https://neris.fsri.org/>

CONTACT US: neris@ul.org

Thomas.Jenkins@ul.org

WATCH:
NERIS Training Videos



SIGN UP:
Newsletter



EVALUATION AND WIN AN IPAD!

- **Submit your workshop and overall evaluations to be automatically entered in two drawings for a new iPad!**
- **Complete your evaluations using the IAFF app:**
 1. Download the IAFF app and sign in with your iaff.org username
 2. Tap the 2026 Strive for Excellence Summit event image to enter the event's dashboard
 3. Tap "Sessions" and tap on the workshops you attended
 4. Tap "Evaluation" and complete the evaluation
 5. Tap "Submit"

For the event's overall evaluation, follow steps 1 and 2, then tap "Event Evaluation" located in the event's Dashboard.

